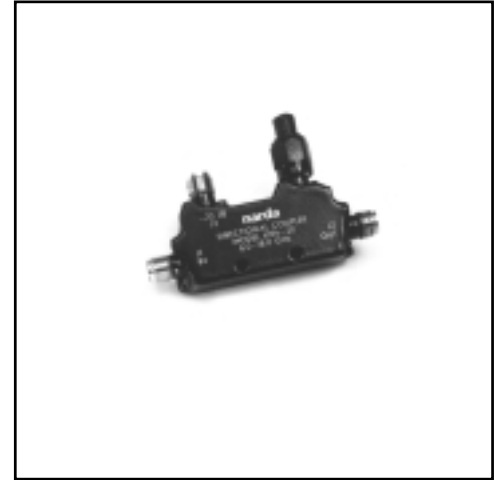


Couplers

HIGH POWER 100 WATT DIRECTIONAL COUPLER

APPLICATIONS

- EW Systems
100 Watt TWT Power Monitor Circuits, BIT Circuits, Jammers
- Test Equipment/ATE
- Power Amplifier Control
- Radar-Transmitter Circuits
- 100 Watt Miniature Stripline Design



FEATURES

- Broadband-6 to 18 GHz,
High Directivity
- Excellent Frequency Flatness
- Operates at 85°C Ambient

SPECIFICATIONS

FREQUENCY RANGE GHz	MODEL	NOMINAL COUPLING dB	MAXIMUM DEVIATION FROM NOMINAL dB	DIRECTIVITY (Min) dB	INSERTION LOSS		VSWR		FREQUENCY* SENSITIVITY dB (Max)	POWER **		WEIGHT (Max)	
					Excluding Coupled Power (Max) dB	True	Primary Line (Max)	Secondary Line (Max)		Average	Peak	Oz	Gr
6-18	4196-20	-20	±1.0	15	0.55	0.6	1.5:1	1.5:1	±0.6	100W	3kW	.88	25

CONNECTORS: SMA

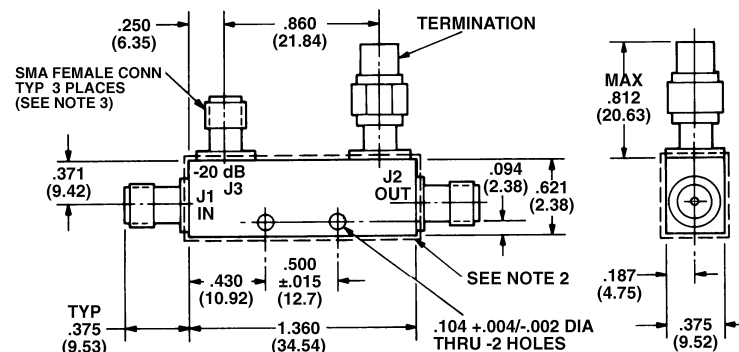
* Frequency Sensitivity is included in Coupling Variation

** Mounted to a Heat Sink (+85° C Max Housing Temperature)

OUTLINE DRAWINGS

NOTES:

1. Dimensions in parentheses are in millimeters and for reference only.
2. Dotted area represents .020 Max buildup of sealant per surface.
3. Connectors mate without interference per MIL-STD-384



TOL: ±.020 (.51)